

## REAL-LIFE SPECIAL: A COMMON INFECTION

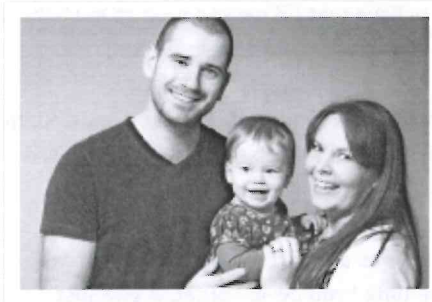
Written by Helen Holmes

font size

Print

Rate this item

(0 votes)



We take a closer look into two different real life experiences, as we explore their inspirational journeys into parenthood and the challenges they bring.

regnancy and childbirth, for most people, are joyful times. But carrying a child and giving birth is also a serious business, and can sometimes bring unexpected complications. A common bacteria carried by one in five women had life-threatening consequences for one newborn baby: Joanne and Craig Collins' daughter Tilly became infected with Group B Strep and developed meningitis and septicaemia. It was a very worrying time for her parents, but

Tilly's now doing well.

Back in winter 2012 we wrote about Sadie and John Sheliker, who were delighted to have become parents, despite Sadie's ongoing battle with cancer. Just over a year ago Sadie very sadly died, but John has been a pillar of strength in bringing up their daughter, Jessica. We bring an update on his experiences of post-bereavement parenting.

Life might throw the occasional curveball, but the two families featured are a true testament to the fact that having children to consider can mean that it's possible to find unexpected strength in the face of adversity.

Joanne and Craig Collins were excited when they discovered that they were expecting their first child, they couldn't wait to become parents. "I remember the day that I took the test clearly," says Joanne, "I was so happy, and I couldn't stop smiling. I hurried downstairs to tell Craig - his face lit up."

In her third trimester Joanne was diagnosed with gestational diabetes, and had to be closely monitored. Then, two weeks before her due date, Joanne went into labour. "I arrived at Winchester Hospital on Saturday the 16th of March, just before 11pm, fully dilated. It wasn't an easy delivery, but, after a couple of hours, Tilly was born - on the 17th of March at 1:07am."

From the beginning, though, Joanne and Craig felt that something wasn't right: "Tilly was grunting, she was purple in colour, and she had little movement. She was taken to be checked over, but several minutes later she was returned to us and given the all clear. Once everything had settled down I held her, with Craig close by my side. We were so happy - I couldn't believe that we were a family."

The idyllic moment wasn't to last long, though. Over the following few hours Tilly continued to have breathing difficulties, and didn't feed. Eventually, after checks on the ward failed to find the cause of Tilly's problems, she was taken with her parents to the Special Care Baby Unit. Tilly was placed in an incubator, and Joanne and Craig found themselves standing helplessly on the sidelines. "I just wanted to hold her," says Joanne. "I was being told that I needed to rest, but all I wanted was to be with my baby." Joanne and Craig had to leave Tilly and return to the ward. "We held each other close and walked the long corridor to the lifts. We were escorted to a room off the post natal ward, where I would stay while Tilly was in special care."

Like this? Tweet it to your followers!

Social sharing

## LATEST FROM HELEN HOLMES

- Local Heroes
- Welcome to the World Bryce Frederick Vincent White
- Welcome to the World Natalie Ava Rombough
- Welcome to the World Ruby Heather & Olivia Diann Powell
- From England to New Zealand

[back to top](#)